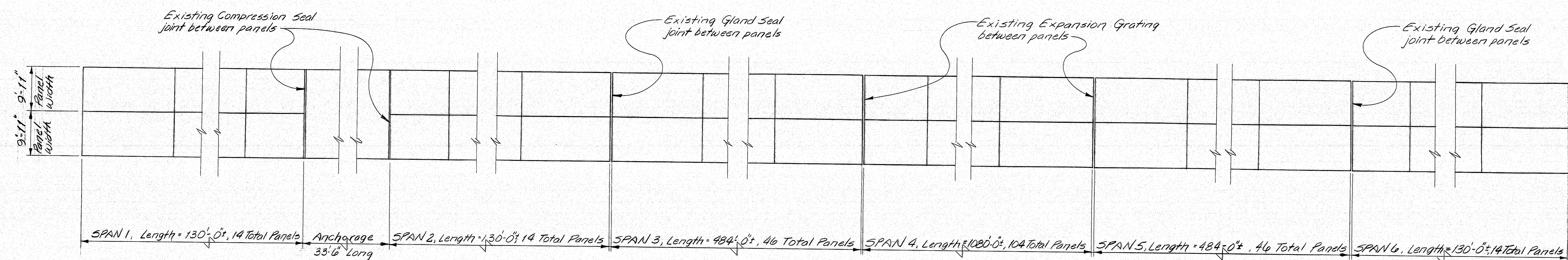


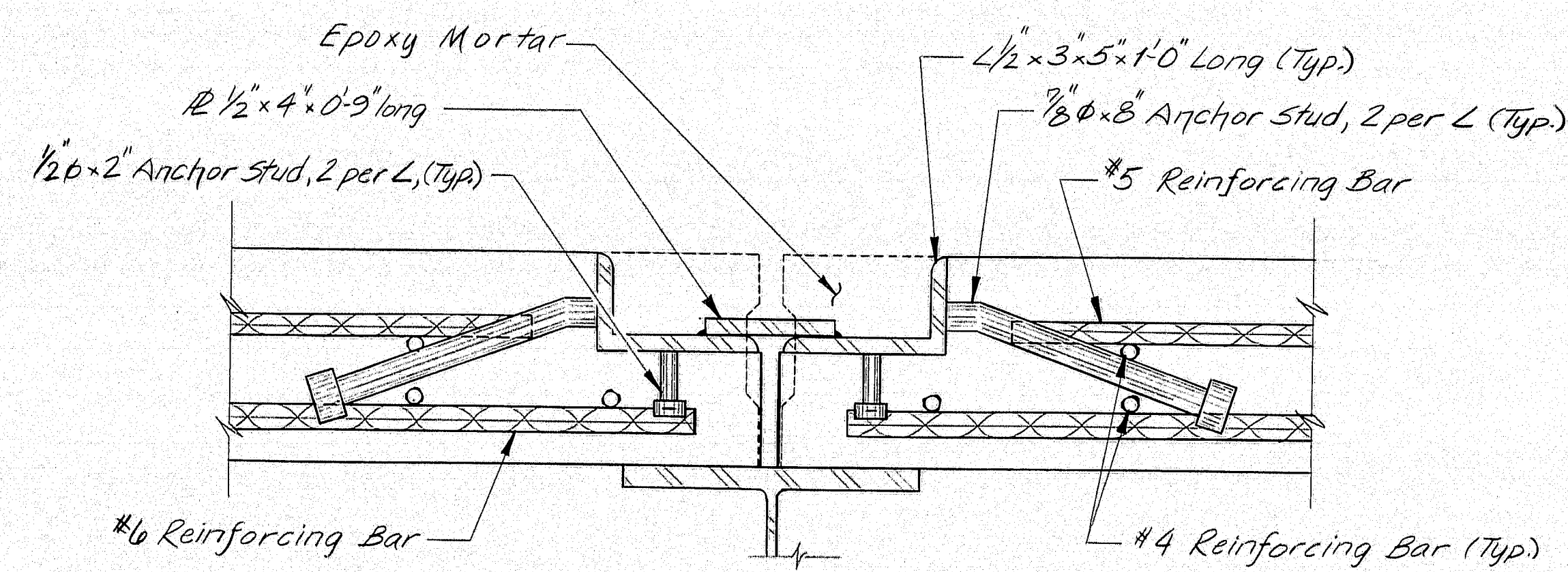
F.H.A. RES. NO.	STATE	PROJECT NUMBER	SHEET NO.	TOTAL SHEETS
1	MAINE	001/00.20	1	1



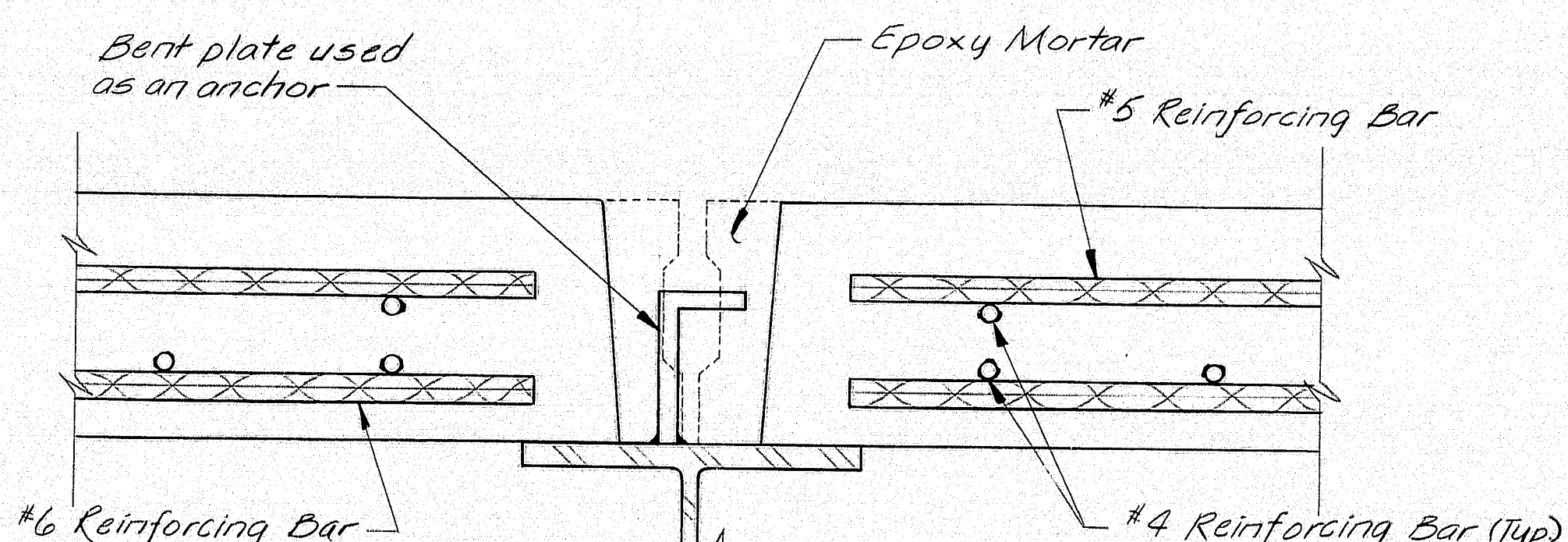
DEER ISLE

SEDGWICK

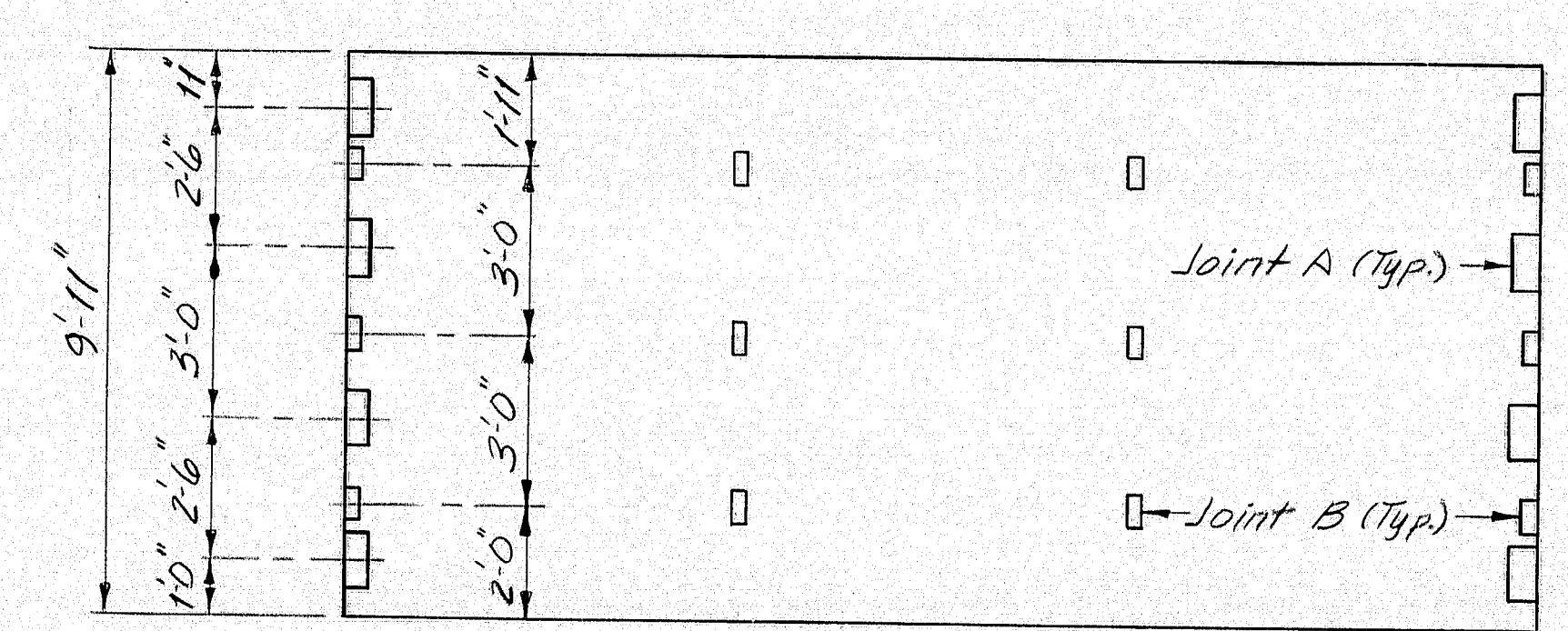
PRECAST SLAB PANEL LAYOUT



EXISTING JOINT BETWEEN PANELS (JOINT A)

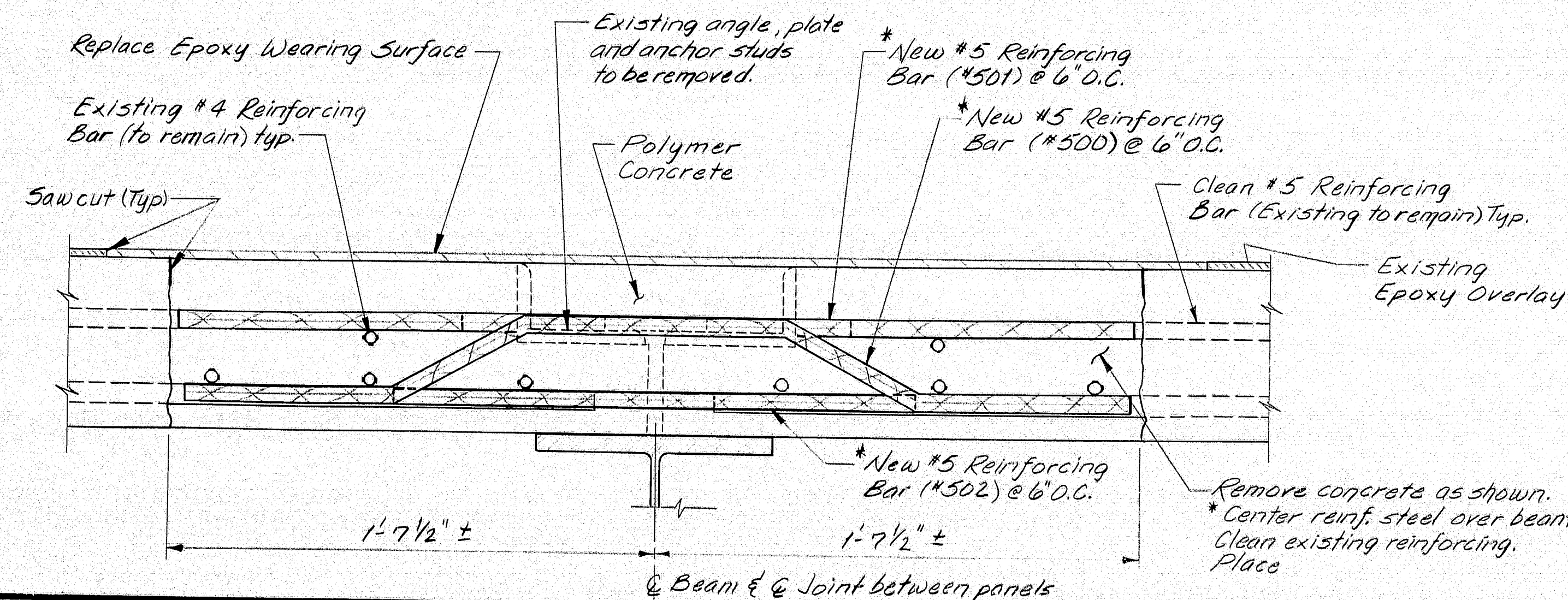


EXISTING JOINT BETWEEN PANELS (JOINT B)



TYPICAL SLAB PANEL PLAN

PROJECT DESIGN ENGINEER	DATE
BY	12/13/90
DESIGN - CHECKED	
REVISIONS	
FIELD CHANGES	



REPAIR PROCEDURES	
DAMAGE	REPAIR
JOINT "B" ONLY:	Remove all existing Epoxy Mortar. Replace Mortar with Polymer Concrete (Sikkal)
JOINT "A" Structurally sound, concrete in good condition (Except Epoxy Mortar)	Remove existing Epoxy Mortar. Inspect and rewire 1/2" if necessary. Replace mortar with Polymer Concrete (Sikkal)
JOINT "A" Concrete at end of slab cracked or broken.	Remove end of slab and repair entire length of joint as shown in the detail at the left.

REINFORCING STEEL SCHEDULE		
MARK NO.	LENGTH	DETAIL
#500	3'-1 1/2"	
#501	3'-2"	
#502	1'-8"	

Reinforcing steel to be A615 Grade 60
 * Field Determine

GENERAL NOTES

- Select type of repair based on condition of joint.
- Saw cut Epoxy wearing surface around repair area.
- Remove all Epoxy Mortar.
- Sand blast areas prior to placing Polymer concrete and again before placing Epoxy wearing surface overlay.
- Epoxy wearing surface to be Polycore-Flexogrid.

111-52

STATE OF MAINE
 DEPARTMENT OF TRANSPORTATION

DEER ISLE SEDGWICK BRIDGE
 OVER
 EGGEMOGGIN REACH
 BETWEEN
 DEER ISLE & SEDGWICK
 HANCOCK COUNTY

GENERAL PLANS

SHEET 1 OF 1 AUGUSTA, MAINE Feb. 1990